

Media Containment Unit For 1/4" - 10" Ball Valves



Flow-Tek's Media Containment Unit has been engineered to provide increased environmental protection and plant safety. In addition to the exceptional primary stem sealing capacity of Flow-Tek's ball valves, the MCU offers a secondary seal which can be monitored for early detection of stem leaks. The investment cast Stainless Steel unit

is highly corrosion resistant and ideal for harsh environments.

Designed for both automated and manual service, the MCU is easily installed in the field onto existing Flow-Tek ball valves. The MCU lowers operating costs by reducing lost production time due to fugitive emissions and unscheduled maintenance.

Applications

- Emission Control
- Low & High Temperature
- High Cycle
- Severe Service
- Monitoring
- Stem Sealant Device
- Stem Extension

FEATURES

Flow-Tek's Media Containment Unit features live-loaded stem sealing with belleville washers that automatically compensate for temperature and pressure fluctuations, maintaining a leak-tight seal for extended cycle life. Multiple RPTFE V-ring stem packing provides the rigid secondary stem seal. A RPTFE gasket blocks against possible leaks between the unit and valve.

The MCU with its added height, increases protection for high temperature applications. The unit also serves as an ideal bonnet for low temperature service.

The housing top pad and stem slot meet Flow-Tek's Secure Mount standards for ease of installation of handle or actuator. Installa-

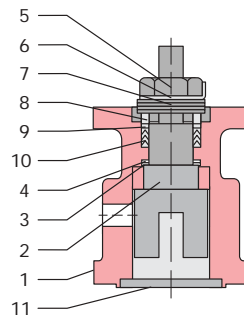
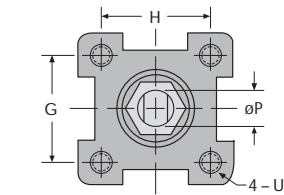
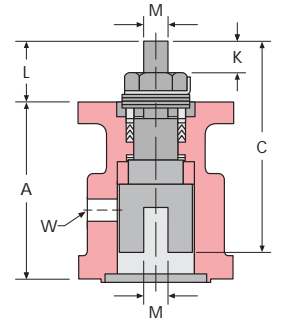
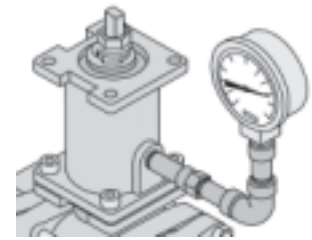
tion and maintenance procedures can be done while valve is under full pressure.

A strategically placed monitoring connection allows for a pressure gauge or sniffer sensor for early detection of primary stem seal leaks.

The MCU can be adapted with a button head check valve to inject sealant for a third seal or for emergency shut-off.

A line can be permanently connected to the unit to provide a positive pressure supply that exceeds the valve line pressure. This insures against any possible valve stem leaks to the atmosphere.

An optional second port allows for a combination of monitors, check valve injection or pressure displacement line.



DIMENSIONS

Unit	A	C	G	H	K	L	M	øP	U UNC	W
MCU - 1	1.97 50	2.32 59	1.17 29.7	1.17 29.7	0.24 6	0.54 14	0.25 6.4	0.38 9.5	#10 - 24	1/8" NPT
MCU - 2	2.91 74	3.25 82.5	1.39 35.4	1.39 35.4	0.35 9	0.72 18	0.32 8	0.437 11.1	1/4" - 20	1/4" NPT
MCU - 3	2.91 74	3.35 85	1.95 49.5	1.95 49.5	0.43 11	0.9 23	0.38 9.5	0.625 15.9	5/16" - 18	1/4" NPT
MCU - 3T Triad Only	3.07 78	3.60 91.5	1.95 49.5	1.95 49.5	.61 15.5	1.10 28	0.47 12	0.625 19	5/16" - 18	1/4" NPT
MCU - 4	4.53 115	6.06 154	3.54 90	1.87 47.6	1.75 44	3.05 77	0.67 17	1.1 28	1/2" - 13	1/4" NPT
MCU - 5	7.22 183	8.87 225	3.38 85.7	3.38 85.7	1.65 42	3.61 91	1.02 26	1.71 43.5	1/2" - 13	1/4" NPT

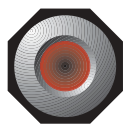
VALVE SIZE SELECTION

Unit	Triad		7000/8000 S85*	F15/F30	RF15	S7000
	SP	FP				
MCU - 1	3/4 - 1 20 - 25	1/2 - 3/4 15 - 20	1/4 - 3/4 6 - 20	1/2 - 3/4 15 - 20	—	1/2 - 1 15 - 25
MCU - 2	—	—	1-1 1/4 25 - 32	1 25	—	1 1/2 40
MCU - 3	1 1/4 - 1 1/2 32 - 40	1 - 1 1/4 25 - 32	1 1/2 - 2 40 - 50	1 1/2 - 2 40 - 50	2 50	2 50
MCU - 3T Triad Only	2 - 2 1/2 50 - 65	1 1/2 - 2 40 - 50	—	—	—	—
MCU - 4	—	—	3 - 4 75 - 100	2 1/2 - 4 65 - 100	3 - 6 75 - 150	3 - 4 75 - 100
MCU - 5	—	—	6 - 8 150 - 200	6 - 8 150 - 200	8 - 10 200 - 250	—

*S85 is not available in 1/4" and 3/8" sizes. Consult factory for 2 1/2" 7000/8000 and 2 1/2", 3" S85 MCU sizing.

COMPONENTS AND MATERIALS

Item	Description	Material	Qty.
1	Body Housing	A351 Gr CF8M	1
2	Stem	SS316	1
3	Washer Protector	PEEK	1
4	Thrust Washer	50/50	2
5	Gland Nut	SS304	1
6	Belleville Washer	SS301	2
7	Lock Washer	SS304	1
8	Packing Gland Sleeve	SS301	2
9	Packing Protector	PEEK	1
10	Stem Packing	RPTFE	3
11	Gasket	RPTFE	1



Flow-Tek

A Subsidiary of BRAY INTERNATIONAL, Inc.
 11850 Tanner Road Houston, Texas 77041
 832.912.2300 Fax: 832.912.2301
 www.flow-tek.com

All statements, technical information, and recommendations in this bulletin are for general use only. Consult Flow-Tek representatives or factory for the specific requirements and material selection for your intended application. The right to change or modify product design or product without prior notice is reserved.